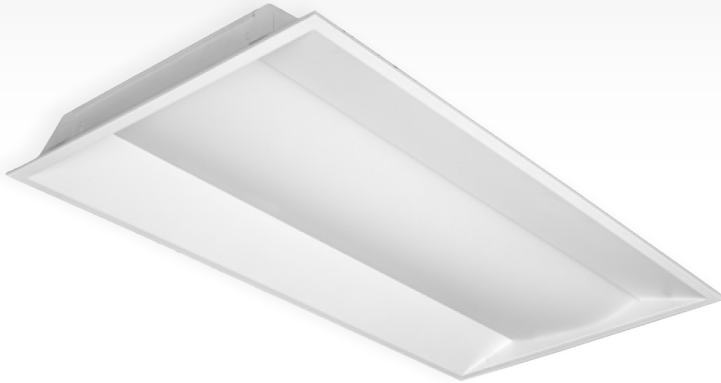


Office Troffer Retrofit Kit



The Office Troffer Retrofit Kit is a universal retrofit package that allows LED light engines to be incorporated into any existing luminaires of standard 1x4, 2x2, or 2x4 dimensions. The design allows fixture housings to be retained while efficient LED light drivers take the place of conventional lamps. The savings in man-hours for disposal and installation are significant, while also allowing businesses to reap the benefits of high efficacy lighting. The kit's T-bar design provides the highly flexible framework by which the kit LEDs are fixed within existing luminaires.

Compared to complete reinstallations, retrofits with the Office Troffer Retrofit Kit offer extremely quick turnaround, using much smaller installation crews. This has been an important consideration for our customers for whom time is mission critical, e.g. corporate offices, schools, and healthcare facilities.

Optics

The retrofit kit is available in color temperatures of 4000K and 5000K. The CRI is a class-leading 85+ and creates excellent visual acuity.

Electrical

Luminous efficacy is a superior 128 Lm/W with a power draw of 40W. L70 is an excellent 156,000 hours.

Mounting

The LED retrofit kit can be installed by hand in a matter of minutes. Any standard-sized fixture can accommodate the Direct Kit.

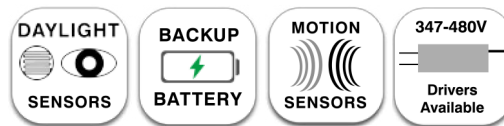
Construction

The Office Troffer Retrofit Kit features a sheet metal design which allows swift installation without the use of any additional tools. The package's T-bar design allows for flexible and intuitive adjustments to fit. The polycarbonate diffuser creates bright and consistent light output matching in quality that of dedicated LED troffers and panels.

Standard Features



Options



Finish



Office Troffer Retrofit Kit

Sample Order: OTUS22-S-20W-4K-PE

Series	Dimension	Wattage	CCT	Options
RK = Retrofit Kit	14 = 1x4 22 = 2x2 24 = 2x4	-25W = 25W -30W = 30W -40W = 40W	4K = 4000K -5K = 5000K	LOD = Bi-Level Sensor EOP = Office On/Off Sensor EM = Emergency Backup Battery

Performance Data

Part No.	Watts (W)	Input Voltage (VAC)	Efficacy (Lm/W)	Lumens(Lm)	CRI	CCT (K)	PF	THD	L70 (Hours)	Dimensions in Inches (L*W*H)
RK-14-25W-PE	22.9	120-277	129 129 133	2942 2942 3057	88	3500 4000 5000	>0.9	15%	156,000	45.83*12*2.84
RK-14-30W-PE	30.4	120-277	127 131 131	3800 4000 4000	85	3500 4000 5000	>0.9	9%	156,000	45.83*12*2.84
RK-14-40W-PE	40.2	120-277	128 128 128	5150 5150 5150	85	4000 5000	>0.9	10%	156,000	45.83*12*2.84
RK-22-20W-PE	20.0	120-277	129 129 133	2580 2580 2660	88	3500 4000 5000	>0.9	15%	156,000	20.67*20.67*2.84
RK22-25W-PE	22.9	120-277	129 129 133	2942 2942 3057	88	3500 4000 5000	>0.9	15%	156,000	20.67*20.67*2.84
RK22-30W-PE	30.4	120-277	127 131 131	3800 4000 4000	85	3500 4000 5000	>0.9	9%	156,000	20.67*20.67*2.84
RK24-25W-PE	22.8	120-277	128 132	2930 3015	88	4000 5000	>0.9	15%	156,000	45.83*20.67*2.84
RK24-30W-PE	31.0	120-277	127 131 131	3900 4000 4000	85	3500 4000 5000	>0.9	17%	156,000	45.83*20.67*2.84
RK22-40W-PE	40.2	120-277	128 128 128	5150 5150 5150	85	4000 5000	>0.9	10%	156,000	20.67*20.67*2.84
RK24-40W-PE	40.0	120-277	126 128 128	5100 5100 5100	85	3500 4000 5000	>0.9	20%	156,000	45.83*20.67*2.84

Color	Housing	Lens Type	Certification	Warranty
Matte White	Sheet Metal & PC Diffuser	Frosted	DLC Premium, ETL	10 Years

*Not all versions of this product may be DLC-qualified. Please inquire with our sales team.

