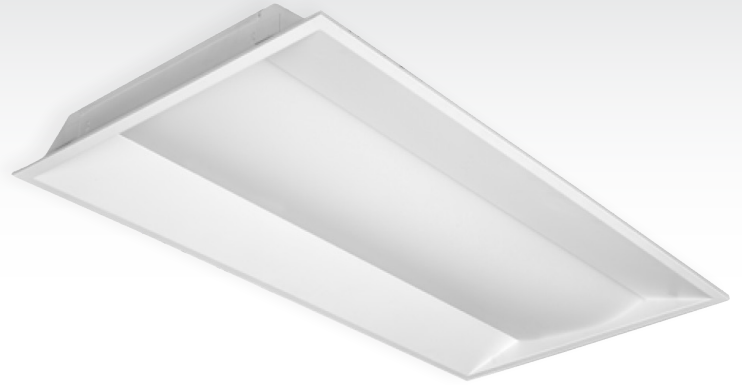


LED Office Troffer

Sleek, versatile LED Office Troffer is ideal for indoor environments where presentation and visual comfort are at a premium. Quality steel construction is designed to maximize heat distribution and cool operation. The attractive molded diffuser provides uniform light distribution and a pleasing aesthetic appeal. Corporate offices, retail outlets, indoor galleries, and other high end installations use the LED Office Troffer to minimize energy consumption while improving their lighting environments.



Optics

The LED Office Troffer is available in color temperatures of 4000K and 5000K. The luminaire's 85+ CRI is ideal for professional indoor illumination, especially in environments requiring visual accuracy including office, design, manufacturing, or service.

Electrical

The luminaire outputs at an excellent efficacy of 126 Lm/W or greater with THD <10%. 20W, 30W, and 40W units are available. The fixture's has an excellent L70 lifespan rated for 156,000 hours. Input voltage is a standard 120-277VAC.

Construction

The LED Troffer's discreet, low-profile frame is fitted from sheet metal, and uses an efficient polycarbonate lens. The frosted diffuser is used to enhance consistency of light distribution. The slim design allows for versatile placement of the luminaire, even when recessed mounting is not available.

Mounting

The LED Troffer can be recessed in any standard sized grid ceiling. In non-grid type ceilings, the fixture may be installed via surface mount. Because of the fixtures slim profile, both mounting solutions are easily incorporated into interior design solutions.

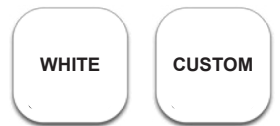
Standard Features



Options



Finish



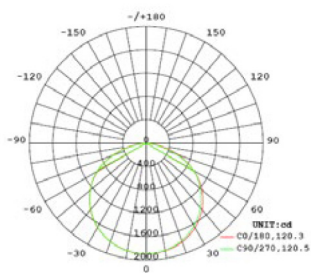
LED Office Troffer

Sample Order: OTUS22-S-20W-4K-PE

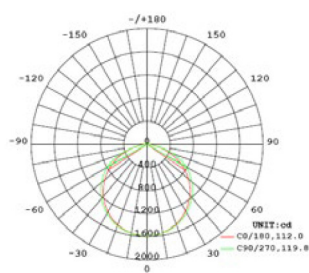
Series	Dimension	Lens	Wattage	CCT	Generation	Options
OTUS= Recessed Troffer (US Standard)	22 = 2x2 24 = 2x4	-S = Solo Troffer	-20= 20W -30 = 30W -40 = 40W	-35 = 3500K -4K = 4000K -5K = 5000K	-PE = Premium	LOD = Bi-Level Sensor EOP = Office On/Off Sensor EM = Emergency Backup Battery

Performance Data

Part No.	Watts (W)	Input Voltage (VAC)	Efficacy (Lm/W)	Lumens(Lm)	CRI	CCT (K)	PF	THD	L70 (Hours)	Dimensions in Inches (L*W*H)
OTUS22-20W	19.1	120-277	135	2700	85+	4000 5000	>0.9	<10%	156,000	23.74*23.74*3.09
OTUS22-30W	30.5	120-277	135	4050	85+	4000 5000	>0.9	<10%	156,000	23.74*23.74*3.09
OTUS22-40W	40.3	120-277	125	5000	85+	4000 5000	>0.9	<10%	156,000	23.74*23.74*3.090
OTUS24-30W	30.0	120-277	135	4050	85+	4000 5000	>0.9	<10%	156,000	23.74*23.74*3.09
OTUS24-40W	40.3	120-277	125	5000	85+	4000 5000	>0.9	<10%	156,000	23.74*23.74*3.09
Color	Housing	Lens Type	Certification	Warranty						
Matte White	Sheet Metal & PC Diffuser	Frosted	ETL	10 Years						



OTUS22-40W



OTUS24-40W

